

50A

Slip ring collector



Slip ring collector consisting of rings coupled with brushes, designed to transfer current from a fixed to a rotating part and used to supply crane motors and cable winders.

FEATURES

- Suitable for transmitting current with 50/60 Hz supply frequency.
- The enclosure features small downward holes for air circulation and to prevent problems due to moisture.
- The lower support plate is provided with three holes to drain any moisture that may form inside the unit.
- The enclosure is made of shock-resistant thermoplastic material to prevent contact with live electrical parts.
- Fitted with phosphor bronze or, on request, graphite brushes, for better duration performances.
- IP protection degree: collector 50A is classified IP22.
- Extreme temperature resistance: -25°C to +70°C.

OPTIONS

- Up to sixteen 50A line rings coupled with brushes.

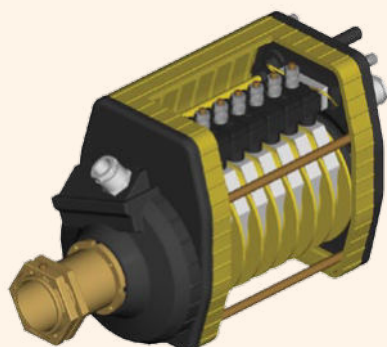
CERTIFICATIONS

- CE marking and UKCA marking.

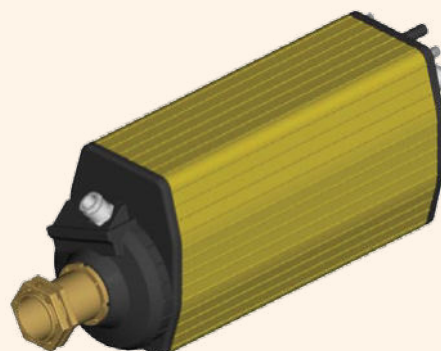
Fill in the "request form" for accurate product configuration.

POSSIBLE ASSEMBLIES

Standard (section view)



Standard 16 rings



CERTIFICATIONS

Conformity to Community Directives	2014/35/UE Low Voltage Directive
	2006/42/CE Machinery Directive
Conformity to UKCA Directives	Supply of Machinery (Safety) Regulations 2008
	Electrical Equipment (Safety) Regulations 2016
Conformity to CE Standards	EN 60204-1 Safety of machinery - Electrical equipment of machines
	EN 60309-1 Plugs, socket-outlets and couplers for industrial purposes - General requirements
	EN 60529 Degrees of protection provided by enclosures
Markings and homologations	CE UK

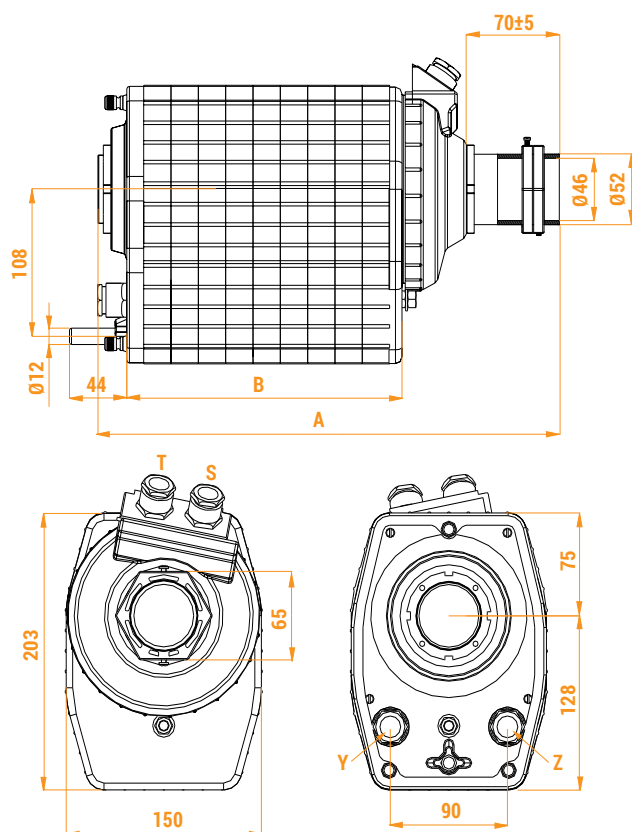
GENERAL TECHNICAL SPECIFICATIONS

Ambient temperature	Storage -40°C/+70°C
	Operational -25°C/+70°C
IP protection degree	IP 22
Insulation category	Class I
Operating positions	Any position
Cable entry	Cable glands M20
	Cable glands M25

ELECTRICAL SPECIFICATIONS

Rated operational current	50 A
Rated operational voltage	400 Vac
Rated insulation voltage	660 Vac
Max. speed	3 rev./min.
Connections	Terminals with M6 screw accepting ring connectors

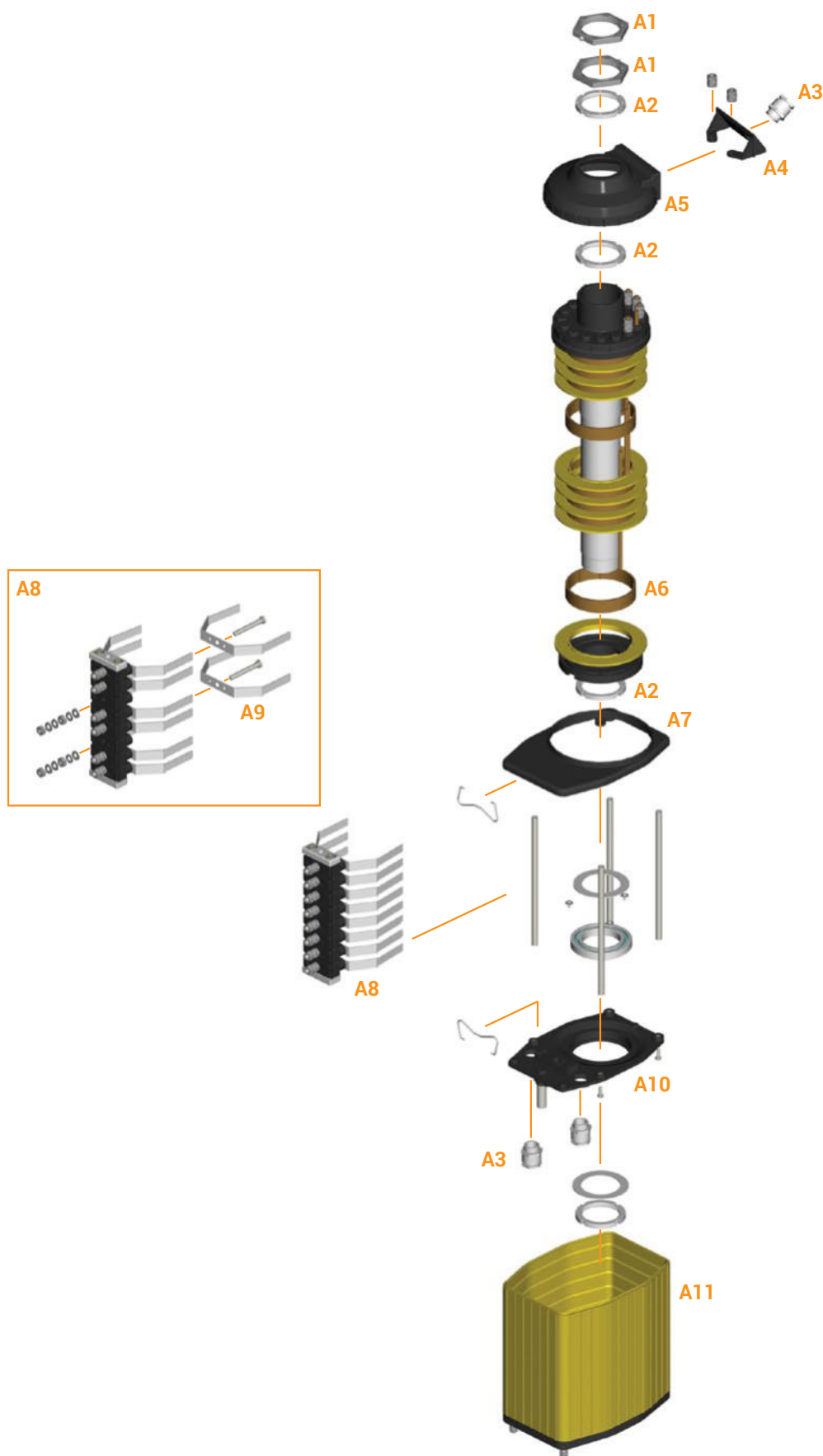
STANDARD SLIP RING COLECTORS AND OVERALL DIMENSIONS (mm)



No. of 50A rings	Type and position of cable glands				Code	Dimensions (mm)	
	S	T	Y	Z		A	B
3	M20	-	-	M20	PF2203P001	260	106
4	M20	-	-	M20	PF2204P001	275	127
5	M20	-	-	M20	PF2205P001	310	148
6	M20	-	-	M20	PF2206P001	325	169
7	M20	M20	M20	M20	PF2207P001	340	190
8	M20	M20	M20	M20	PF2208P001	370	211
9	M20	M20	M20	M20	PF2209P003	385	232
10	M20	M20	M20	M20	PF2210P001	405	253
11	M20	M20	M20	M20	PF2211P002	435	274
12	M20	M20	M20	M20	PF2212P001	450	295
13	M20	M20	M20	M20	PF2213P001	465	316
14	M20	M20	M20	M20	PF2214P001	485	337
15	M20	M20	M20	M20	PF2215P001	515	358
16	M20	M20	M20	M20	PF2216P001	530	379

Max. number of rings: 16.



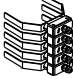
ASSEMBLY DRAWING





Refer to the following tables for descriptions of components: "Brushes and rings", "Cable glands" and "Accessories".

COMPONENTS



Brushes and rings

Ref.	Drawing	Description	Code
A6		Brass ring Ø 92mm	PRSL4015PE
A9		Phosphor bronze brush	PRSL4018PI
A8		Brush-holder with brushes	Codes on request

Cable glands

Ref.	Drawing	Description	Code
A3		Cable gland M20	PRPS1075PE
		Cable gland M25	PRPS1076PE
A4		Cable gland support	PRSL9066PI

Accessories

Ref.	Drawing	Description	Code
A1		Nut	PRSL4010PE
A2		Ring - pitch 1.5	PRSL4001PE
A5		Cover	PRSL5680PI
A7		Upper plate	PRSL5685PI
A10		Bearing holder lower plate	PRSL5690PI
A11		Protection	Codes on request

