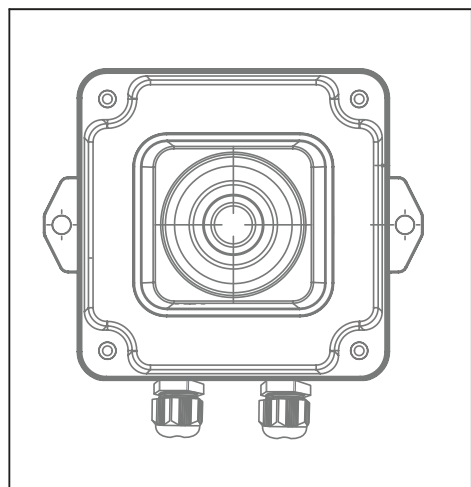
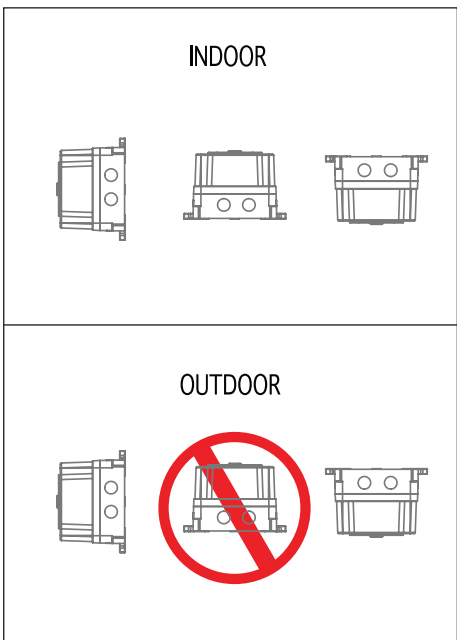




TERMHD0700*
TERMHD0701*
TERMHD0702*



- Electrical connection must be carried out at least by trained electrical specialists.
- The product can be used indoors and outdoors.
- The interior and exterior compatibility of the product is like the picture.
- The product should be installed where the vibration and heat is minimum.



Model	Power Supply	Current (mA) Max.
TERMHD0700***	12-30V AC/DC	650mA
TERMHD0701***	48V AC	310mA
TERMHD0702***	85-250V AC/DC 50Hz	120mA

Sound Intensity			
Melody	Cable Color	Sound Intensity (dB max) (10cm)	Sound Intensity (dB max) (100cm)
-	Empty	-	-
1	Red	127	121
2	Green	121	110
3	Dark Blue	118	107
4	Purple	126	117
5	Light Blue	120	105
6	Yellow	122	110
7	White	126	117

* Values may vary by +/- %5.

Model	Weight
TERMHD0700***	1600gr
TERMHD0701***	1600gr
TERMHD0702***	1900gr

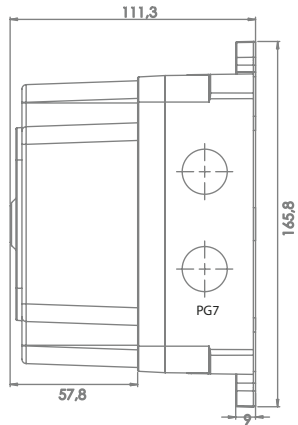
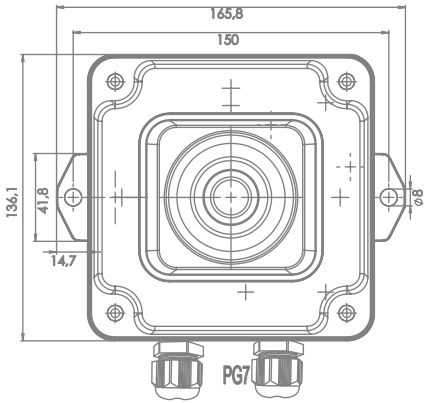
It is recommended that people with epilepsy should not use it.



T.E.R. Tecno Elettrica Ravasi Srl a socio unico
Via Garibaldi 29/31 - 23885 Calco (LC) - Italy
Tel. +39 039 9911011 - Fax +39 039 9910445
E-mail: info@ter.it - www.ter.it
Sede Legale - Registered Office
Via San Vigilio 2 - 23887 Olgiate Molgora (LC) - Italy

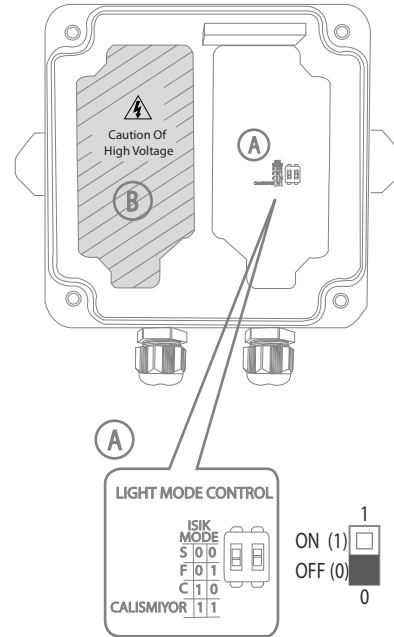
1

TECHNICAL DIAGRAM



3

LIGHT MODE SELECTION

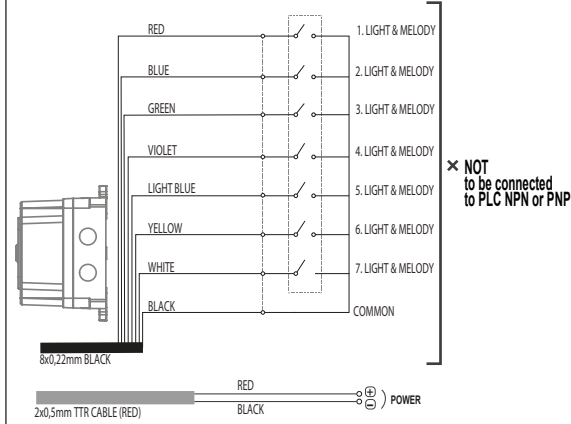


A The selection of built-in light type:

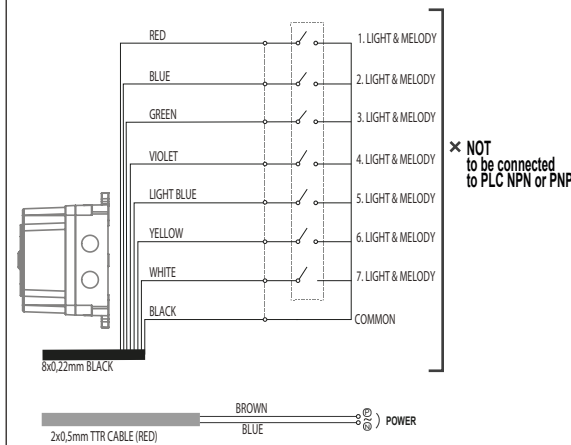
Light mode selection	1	2
Continuous	0	0
Flashing	0	1
Strobe	1	0
Light Off	1	1

B Avoid contact/touch the power card in 85-250V AC/DC model products.

2

WIRING DIAGRAM
12-30V AC/DC - 48V AC

2

WIRING DIAGRAM
85-250V AC/DC

2a

KABLOLAMA TALIMATLARI
WIRING INSTRUCTION

Melody&Light Wires: Red-Blue-Green-Violet-Light
Blue-Yellow-White
Signal Wires: Black
Power Supply Cable: 2x0,50 TTR
(Red-Black for 12-24V AC/DC and 48V AC
Blue-Brown for 40-250V AC/DC)

- Do not supply power to the Melody&Light and Signal Wires, and do not connect them to any PLC NPN or PNP terminals to avoid damage or malfunction.

Only the power supply wires should be used to provide power to the system.
- The product warranty will be void if power is supplied to the Melody&Light and Signal Wires.

- For melodies and light, make a dry contact connection between the Melody&Light wires and the Black signal wire.

- When the cable specified in the wiring diagram is triggered, the corresponding light and melody are activated. In the event of multiple triggers, the product operates according to the color sequence, with priority given in the following order: Red, Blue, Green, Violet, Light Blue, Yellow, White.