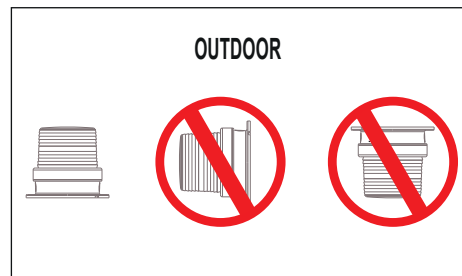


- Ⓔ
- Electrical connection is to be made by trained electrical specialists only.
  - The product can be used indoors & outdoors.
  - The interior & exterior compatibility of the product is like in the pictures below.
  - The product should be installed where the vibration and heat is minimum.



| TERMSB10 Model |               |                   |
|----------------|---------------|-------------------|
| P/N            | Power Supply  | Current (mA) Max. |
| TERMSB10***    | 12-24V AC/DC  | 447-531mA         |
| TERMSB10***    | 85-250V AC/DC | 41-58mA           |

**R G Y B W**  
\*\*\* Indicates Light colors.  
R-Red / G-Green / Y-Yellow / B-Blue / W-White

| Light Pattern |          |
|---------------|----------|
| P1            | Flashing |
| P2            | Strobe   |

| Sound Intensity |                                 |                                  |
|-----------------|---------------------------------|----------------------------------|
| Melody          | Sound Intensity (dB max) (10cm) | Sound Intensity (dB max) (100cm) |
| M1              | 96-110                          | 83-97                            |
| M2              | 94-109                          | 77-96                            |
| M3              | 93-103                          | 76-85                            |
| M4              | 90-104                          | 74-85                            |
| M5              | 92-106                          | 74-88                            |
| M6              | 93-110                          | 79-94                            |
| M7              | 85-104                          | 68-87                            |
| M8              | 94-110                          | 76-96                            |
| M9              | 90-110                          | 75-94                            |

\*\*\*Values may vary by +/- 5%.

| Weight         |           |   |
|----------------|-----------|---|
| P/N            | Weight    | Color                                   |
| SNT-915-ND-*** | 275-295gr | Red<br>Green<br>Yellow<br>Blue<br>White |
| SNT-925-ND-**  | 335-350gr |   |



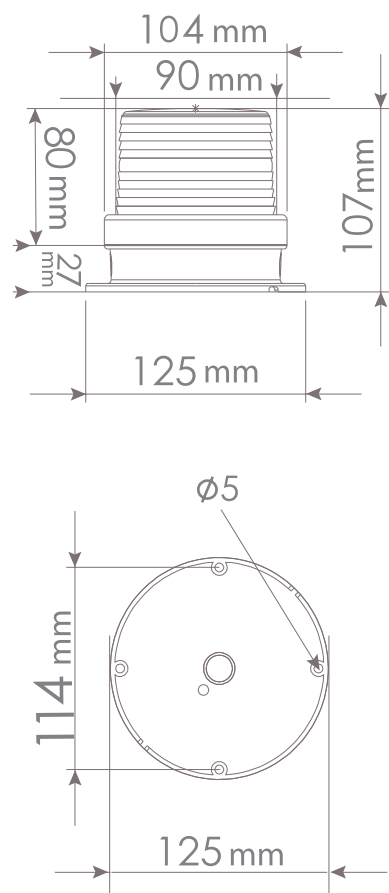
\*It is recommended that people with epilepsy should not use it.



**T.E.R. Tecnica Elettrica Ravasi Srl a socio unico**  
Via Garibaldi 29/31 - 23885 Calco (LC) - Italy  
Tel. +39 039 9911011 - Fax +39 039 9910445  
E-mail: info@ter.it - www.ter.it  
Sede Legale - Registered Office  
Via San Vigilio 2 - 23887 Olgiate Molgora (LC) - Italy

1

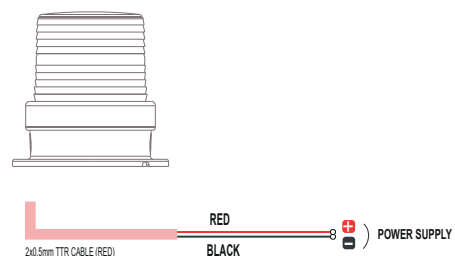
## TECHNICAL DIAGRAM



2

## WIRING DIAGRAM

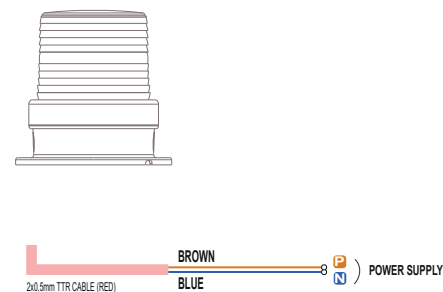
12-24V AC/DC



2

## WIRING DIAGRAM

85-250V AC/DC



3

## LIGHT LEVEL DETECTION

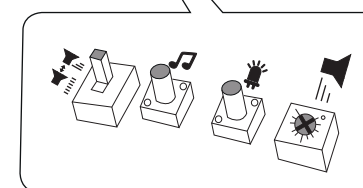
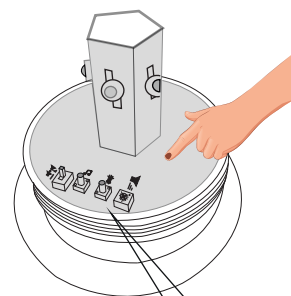


EN

- Light Level Detection (Produced with Photocell):  
The device is equipped with a photocell that detects light levels, activating in darkness and deactivating in brightness.

4

## LIGHT&amp;MELODY ADJUSTMENT

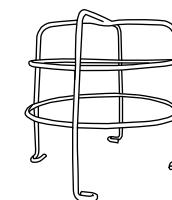


EN

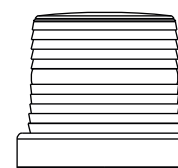
- The potentiometer mode is active. The sound level can be manually adjusted using the potentiometer.
- The sound level increases gradually.
- To change melodies, press and release the melody button.
- To change the light mode, press and release the light button.
- The sound level can be adjusted using the potentiometer.

5

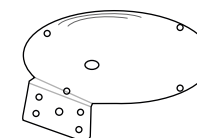
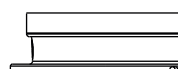
## SPARE PARTS



TERMSP0702



TERMSP0102R (RED)  
TERMSP0102G (GREEN)  
TERMSP0102Y (YELLOW)  
TERMSP0102B (BLUE)  
TERMSP0102W (WHITE)



TERMSP0602