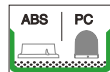
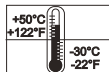
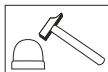




TERMWL1200
TERMWL1201
TERMWL1202



(EN)

- Electrical connection is to be made by trained electrical specialists only.
- The product can be used indoors & outdoors.
- The interior & exterior compatibility of the product is like in the pictures below.
- The product should be installed where the vibration and heat is minimum.

INDOOR



OUTDOOR



TERMWL12 Model

P/N	Power Supply	Current (mA) Max.
TERMWL1200	12-30V AC/DC	625mA
TERMWL1201	48V AC	475mA
TERMWL1202	85-250V AC/DC 50Hz	400mA



Light Pattern

P/N	Light Pattern	Melody
TERMWL1200	Strobe	7
TERMWL1201		
TERMWL1202		
Built-in Light Colors	<div><div>1</div><div>2</div><div>3</div><div>4</div><div>5</div><div>6</div><div>7</div></div>	



Sound Intensity

Melody	Cable Color	Sound Intensity (dB max) (10cm)	Sound Intensity (dB max) (100cm)
1	Red	127	121
2	Dark Blue	118	107
3	Green	121	110
4	Purple	126	117
5	Light Blue	120	105
6	Yellow	122	110
7	White	126	117

*** Values may vary by +/- 5%.



Weight

P/N	Weight	Color
TERMWL1200	1340 - 1350 gr	Red Blue Green Violet Light Blue Yellow White
TERMWL1201	1340 - 1350 gr	
TERMWL1202	1355 - 1365 gr	



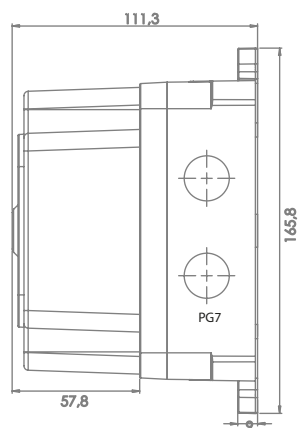
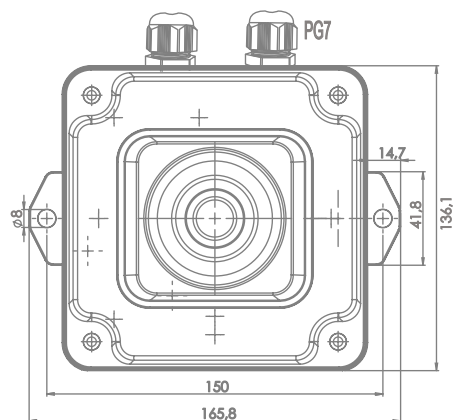
*It is recommended that people with epilepsy should not use it.



T.E.R. Tecno Elettrica Ravasi Srl a socio unico
Via Garibaldi 29/31 - 23885 Calco (LC) - Italy
Tel. +39 039 9911011 - Fax +39 039 9910445
E-mail: info@ter.it - www.ter.it
Sede Legale - Registered Office
Via San Vigilio 2 - 23887 Olgiate Molgora (LC) - Italy

1

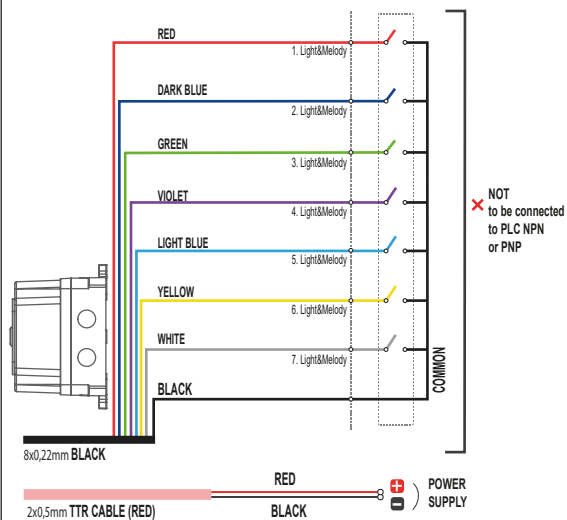
TECHNICAL DIAGRAM



2

WIRING DIAGRAM

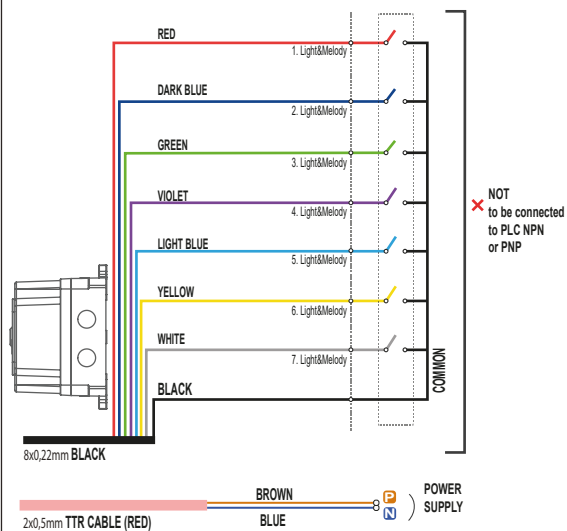
12-30V AC/DC - 48V AC



2

WIRING DIAGRAM

85-250V AC/DC



2a

WIRING INSTRUCTION



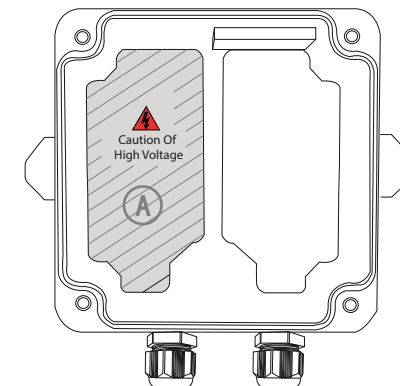
EN

Melody&Light Wires: Red-Blue-Green-Violet-Light Blue-Yellow-White
Common Wires: Black
Power Supply Cable: 2x0.50 TTR
 (Red-Black for 12-24V AC/DC and 48V AC)
 (Blue-Brown for 40-250V AC/DC)

- Do not supply power to the Melody&Light and Common Wires, and do not connect directly to any PLC NPN or PNP terminals to avoid damage or malfunction. Only the power supply wires should be used to provide power to the system.
- The product warranty will be void if power is supplied to the Melody&Light and Common Wires.
- For melodies and light, make a dry contact connection between the Melody&Light wires and the Black Common wire.
- When the cable specified is triggered, the corresponding light and melody are activated. In the event of multiple triggers, the product operates according to the color sequence, with priority given in the following order: Red, Dark Blue, Green, Purple, Light Blue, Yellow, White.

3

ATTENTION



- Avoid contact/touch the power card in 85-250V AC/DC while the device is powered.